

REVISIONS					
ZONE	REV.	DESCRIPTION	DATE	BY	ENGINEERING Q.A./ENG. APPROVAL

- NOTES:**
- REFER TO PRODUCT LINE SPECIFICATION SHEET FOR ELECTRICAL AND MECHANICAL CONSUMPTION REQUIREMENTS.
  - INFORMATION CONTAINED ON THIS DRAWING IS SUBJECT TO CHANGE WITHOUT NOTICE.

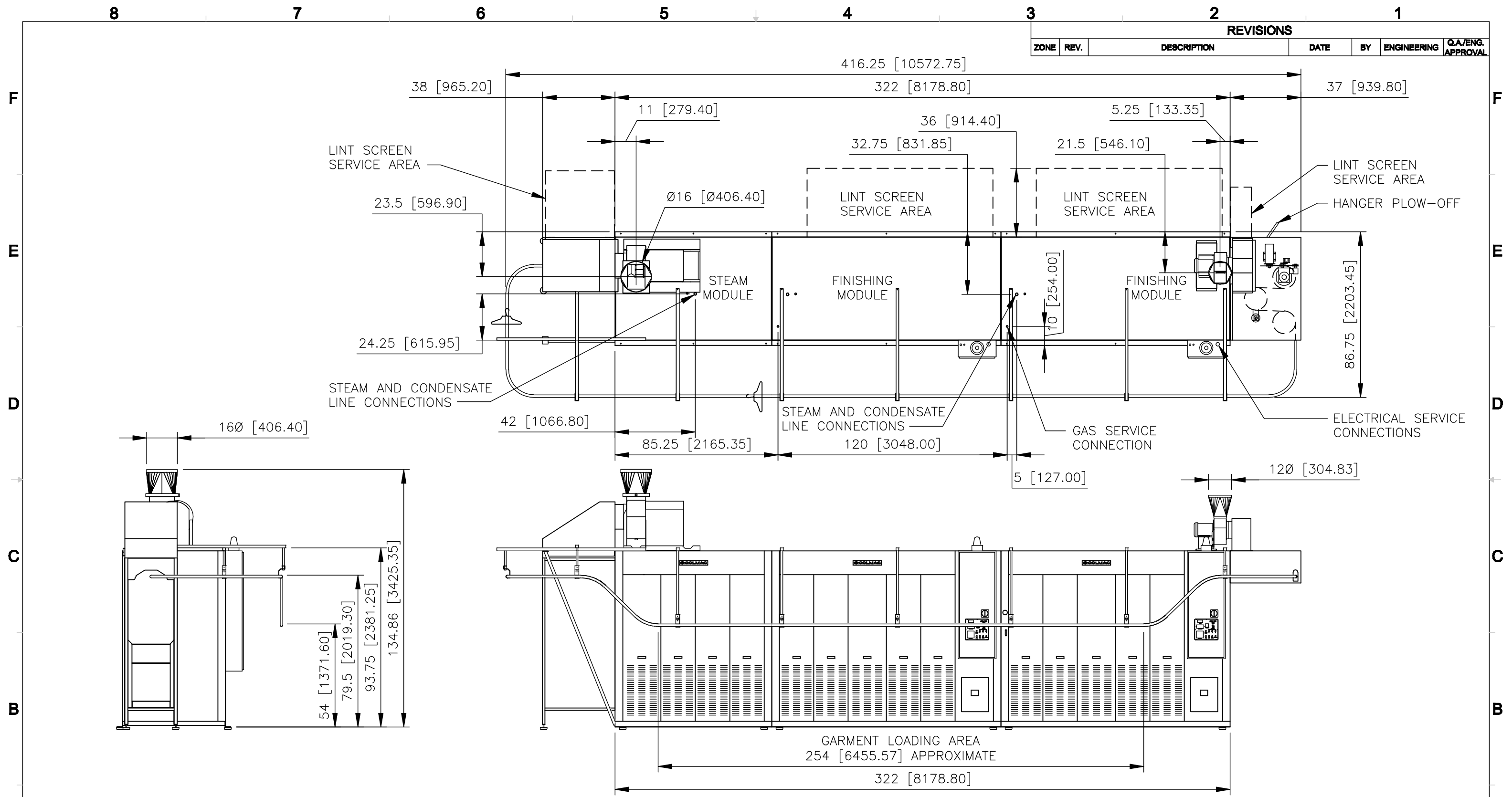
**PROPRIETARY AND CONFIDENTIAL.**  
 THE INFORMATION CONTAINED IN THIS DRAWING IS THE SOLE PROPERTY OF COLMAC INDUSTRIES. ANY REPRODUCTION IN PART OR AS A WHOLE WITHOUT THE WRITTEN PERMISSION OF COLMAC INDUSTRIES IS PROHIBITED.

UNLESS OTHERWISE SPECIFIED: DIMENSIONS ARE IN INCHES [mm] TOLERANCES: FRACTIONAL: ±1/16 ANGULAR: MACH: ±1° BEND: ±1° TWO PLACE DECIMAL: ±0.03 THREE PLACE DECIMAL: ±0.031		CONTRACT NO.		COLMAC INDUSTRIES 401 N. Lincoln, Colville, Washington 99114 (509)884-4505	
DRAWN BY: NAH		DATE: 04/14/08		TITLE: INSTALLATION AND SALES CFS 2100-2 G/S-X RH LOW CONVEYOR	
ENGINEER:		DATE:		SIZE: DWG. NO.	
ENG APPR.		DATE:		B 970366-0001	
SOLIDWORKS		AUTOCAD		SCALE: - UNIT WT. - SHEET: - OF -	

REV. #	REV STATUS OF SHEET

APPLICATIONS

DO NOT SCALE DRAWING



REVISIONS					
ZONE	REV.	DESCRIPTION	DATE	BY	ENGINEERING / Q.A/ENG. APPROVAL

- NOTES:**
- REFER TO PRODUCT LINE SPECIFICATION SHEET FOR ELECTRICAL AND MECHANICAL CONSUMPTION REQUIREMENTS.
  - INFORMATION CONTAINED ON THIS DRAWING IS SUBJECT TO CHANGE WITHOUT NOTICE.

UNLESS OTHERWISE SPECIFIED: DIMENSIONS ARE IN INCHES [mm] TOLERANCES: FRACTIONAL: ±1/16 ANGULAR: MACH: ±1° BEND: ±1° TWO PLACE DECIMAL: ±0.03 THREE PLACE DECIMAL: ±0.031	CONTRACT NO.		COLMAC INDUSTRIES 401 N. Lincoln, Colville, Washington 99114 (509)884-4505	
	DRAWN BY: NAH	DATE: 04/14/08	TITLE: <b>INSTALLATION AND SALES</b> <b>CFS 2100-2 G/S-X LH</b> <b>LOW CONVEYOR</b>	
	ENGINEER:	DATE:	SIZE: DWG. NO.	REV
	ENG APPR.	DATE:	<b>B 970367-0001</b>	-
APPLICATIONS		SOLIDWORKS	AUTOCAD	SCALE: - UNIT WT. - SHEET: - OF -
DO NOT SCALE DRAWING				

PROPRIETARY AND CONFIDENTIAL  
 THE INFORMATION CONTAINED IN THIS DRAWING IS THE SOLE PROPERTY OF COLMAC INDUSTRIES. ANY REPRODUCTION IN PART OR AS A WHOLE WITHOUT THE WRITTEN PERMISSION OF COLMAC INDUSTRIES IS PROHIBITED.

REV. #	REV STATUS OF SHEET