

REVISIONS						
ZONE	REV.	DESCRIPTION	DATE	BY	ENGINEERING	Q.A./ENG. APPROVAL

- NOTES:**
- REFER TO PRODUCT LINE SPECIFICATION SHEET FOR ELECTRICAL AND MECHANICAL CONSUMPTION REQUIREMENTS.
 - INFORMATION CONTAINED ON THIS DRAWING IS SUBJECT TO CHANGE WITHOUT NOTICE.

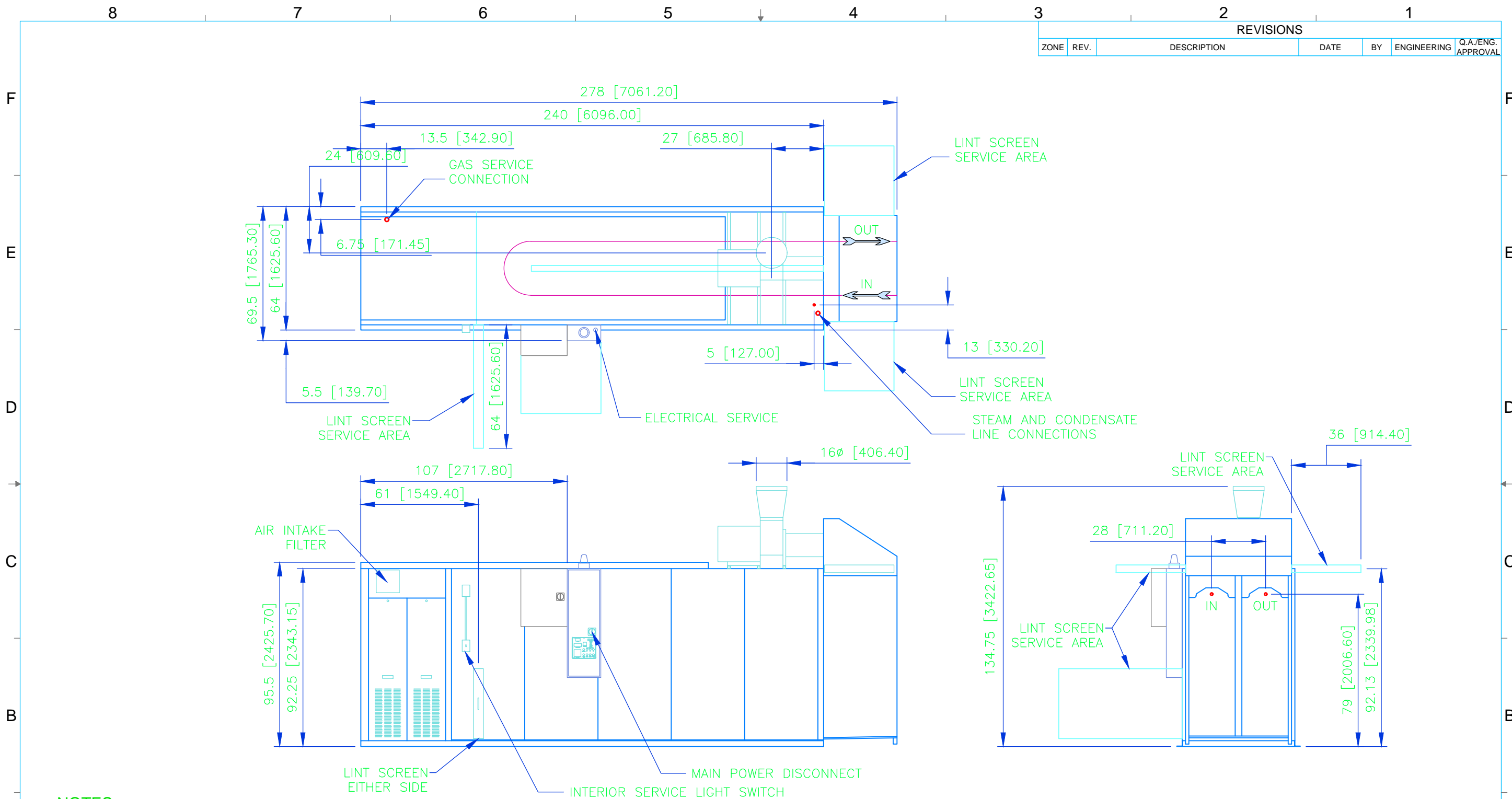
UNLESS OTHERWISE SPECIFIED:
 DIMENSIONS ARE IN INCHES [mm]
 TOLERANCES:
 FRACTIONAL ±1/16
 ANGULAR: MACH ±1° BEND ±1°
 TWO PLACE DECIMAL ±0.03
 THREE PLACE DECIMAL ±0.031

CONTRACT NO.		COLMAC INDUSTRIES 401 N. Lincoln, Colville, Washington 99114 (509)684-4505	
DRAWN BY: BBU		DATE: 9/19/16	
ENGINEER:		DATE:	
ENG APPR.:		DATE:	
SOLIDWORKS		AUTOCAD	
DO NOT SCALE DRAWING		SIZE: DWG. NO.	REV
SCALE: -		UNIT WT. -	SHEET: - OF -

PROPRIETARY AND CONFIDENTIAL
 THE INFORMATION CONTAINED IN THIS DRAWING IS THE SOLE PROPERTY OF COLMAC INDUSTRIES. ANY REPRODUCTION IN PART OR AS A WHOLE WITHOUT THE WRITTEN PERMISSION OF COLMAC INDUSTRIES IS PROHIBITED.

REV. #	REV STATUS

APPLICATIONS



REVISIONS					
ZONE	REV.	DESCRIPTION	DATE	BY	ENGINEERING Q.A./ENG. APPROVAL

NOTES:

1. REFER TO PRODUCT LINE SPECIFICATION SHEET FOR ELECTRICAL AND MECHANICAL CONSUMPTION REQUIREMENTS.
2. INFORMATION CONTAINED ON THIS DRAWING IS SUBJECT TO CHANGE WITHOUT NOTICE.

PROPRIETARY AND CONFIDENTIAL
THE INFORMATION CONTAINED IN THIS DRAWING IS THE SOLE PROPERTY OF COLMAC INDUSTRIES. ANY REPRODUCTION IN PART OR AS A WHOLE WITHOUT THE WRITTEN PERMISSION OF COLMAC INDUSTRIES IS PROHIBITED.

REV. #	REV STATUS

UNLESS OTHERWISE SPECIFIED: DIMENSIONS ARE IN INCHES [mm] TOLERANCES: FRACTIONAL ±1/16 ANGULAR: MACH ±1° BEND ±1° TWO PLACE DECIMAL ±0.03 THREE PLACE DECIMAL ±0.031		CONTRACT NO.	COLMAC INDUSTRIES 401 N. Lincoln, Colville, Washington 99114 (509)684-4505	
DRAWN BY: BBU DATE: 9/19/16		TITLE: INSTALLATION AND SALES CTU 240 G/S, PLC, LH		
ENGINEER: . DATE: .		SIZE: DWG. NO.		
ENG APPR. . DATE: .		B 970588-0002		
SOLIDWORKS AUTOCAD		SCALE: - UNIT WT. - SHEET: - OF -		