

**NOTES:**

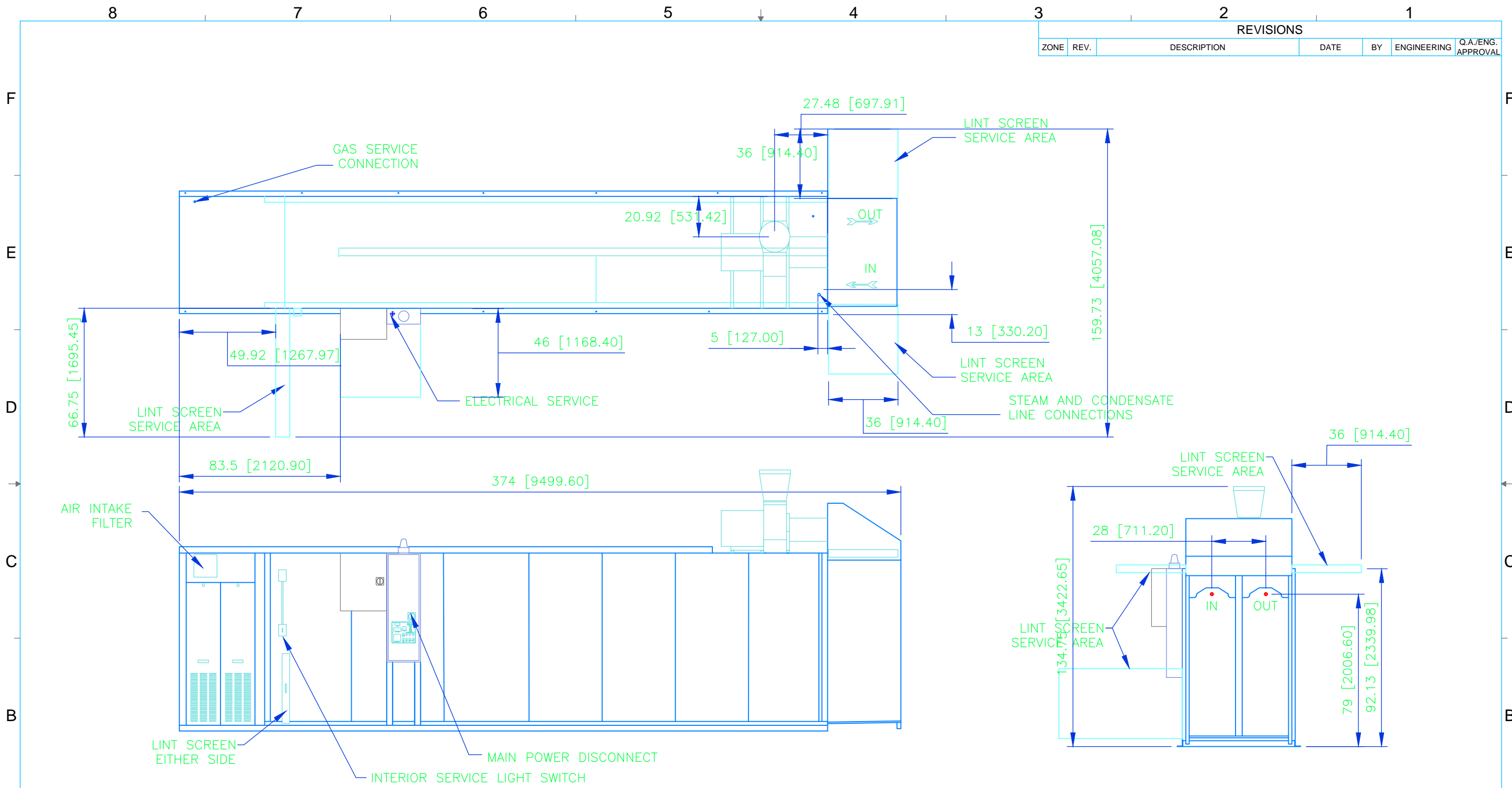
- REFER TO PRODUCT LINE SPECIFICATION SHEET FOR ELECTRICAL AND MECHANICAL CONSUMPTION REQUIREMENTS.
- INFORMATION CONTAINED ON THIS DRAWING IS SUBJECT TO CHANGE WITHOUT NOTICE.

PROPRIETARY AND CONFIDENTIAL  
 THE INFORMATION CONTAINED IN THIS DRAWING IS THE SOLE PROPERTY OF COLMAC INDUSTRIES. ANY REPRODUCTION IN PART OR AS A WHOLE WITHOUT THE WRITTEN PERMISSION OF COLMAC INDUSTRIES IS PROHIBITED.

UNLESS OTHERWISE SPECIFIED: DIMENSIONS ARE IN INCHES [mm] TOLERANCES: FRACTIONAL ± 1/16 ANGULAR: MACH ± 1° BEND ± 1° TWO PLACE DECIMAL ± 0.03 THREE PLACE DECIMAL ± 0.031	CONTRACT NO.		COLMAC INDUSTRIES 401 N. Lincoln, Colville, Washington 99114 (509)684-4505	
	DRAWN BY: BBU		DATE: 9/29/16	
	ENGINEER:		DATE:	
	ENG APPR.:		DATE:	
SOLIDWORKS		AUTOCAD		TITLE: <b>INSTALLATION AND SALES</b> <b>CTU 340 G/S, PLC, RH</b>
DO NOT SCALE DRAWING		SIZE: DWG. NO. <b>B 970590-0001</b>	REV -	

REV. #	REV STATUS
SHT. #	OF SHEET

APPLICATIONS



REVISIONS						
ZONE	REV.	DESCRIPTION	DATE	BY	ENGINEERING	Q.A./ENG. APPROVAL

- NOTES:**
- REFER TO PRODUCT LINE SPECIFICATION SHEET FOR ELECTRICAL AND MECHANICAL CONSUMPTION REQUIREMENTS.
  - INFORMATION CONTAINED ON THIS DRAWING IS SUBJECT TO CHANGE WITHOUT NOTICE.

UNLESS OTHERWISE SPECIFIED: DIMENSIONS ARE IN INCHES [mm] TOLERANCES: FRACTIONAL ± 1/16 ANGULAR: MACH ± 1° BEND ± 1° TWO PLACE DECIMAL ± 0.03 THREE PLACE DECIMAL ± 0.031	CONTRACT NO.		<b>COLMAC INDUSTRIES</b> 401 N. Lincoln, Colville, Washington 99114 (509)684-4505	
	DRAWN BY: BBU		DATE: 9/29/16	
	ENGINEER:		DATE:	
	ENG APPR.		DATE:	
SOLIDWORKS		AUTOCAD		TITLE: <b>INSTALLATION AND SALES</b> <b>CTU 340 G/S, PLC, LH</b>
DO NOT SCALE DRAWING		SIZE: DWG. NO. <b>B 970590-0002</b>	REV -	SCALE: - UNIT WT. - SHEET: - OF -

PROPRIETARY AND CONFIDENTIAL  
 THE INFORMATION CONTAINED IN THIS DRAWING IS THE SOLE PROPERTY OF COLMAC INDUSTRIES. ANY REPRODUCTION IN PART OR AS A WHOLE WITHOUT THE WRITTEN PERMISSION OF COLMAC INDUSTRIES IS PROHIBITED.

REV. #	REV STATUS