

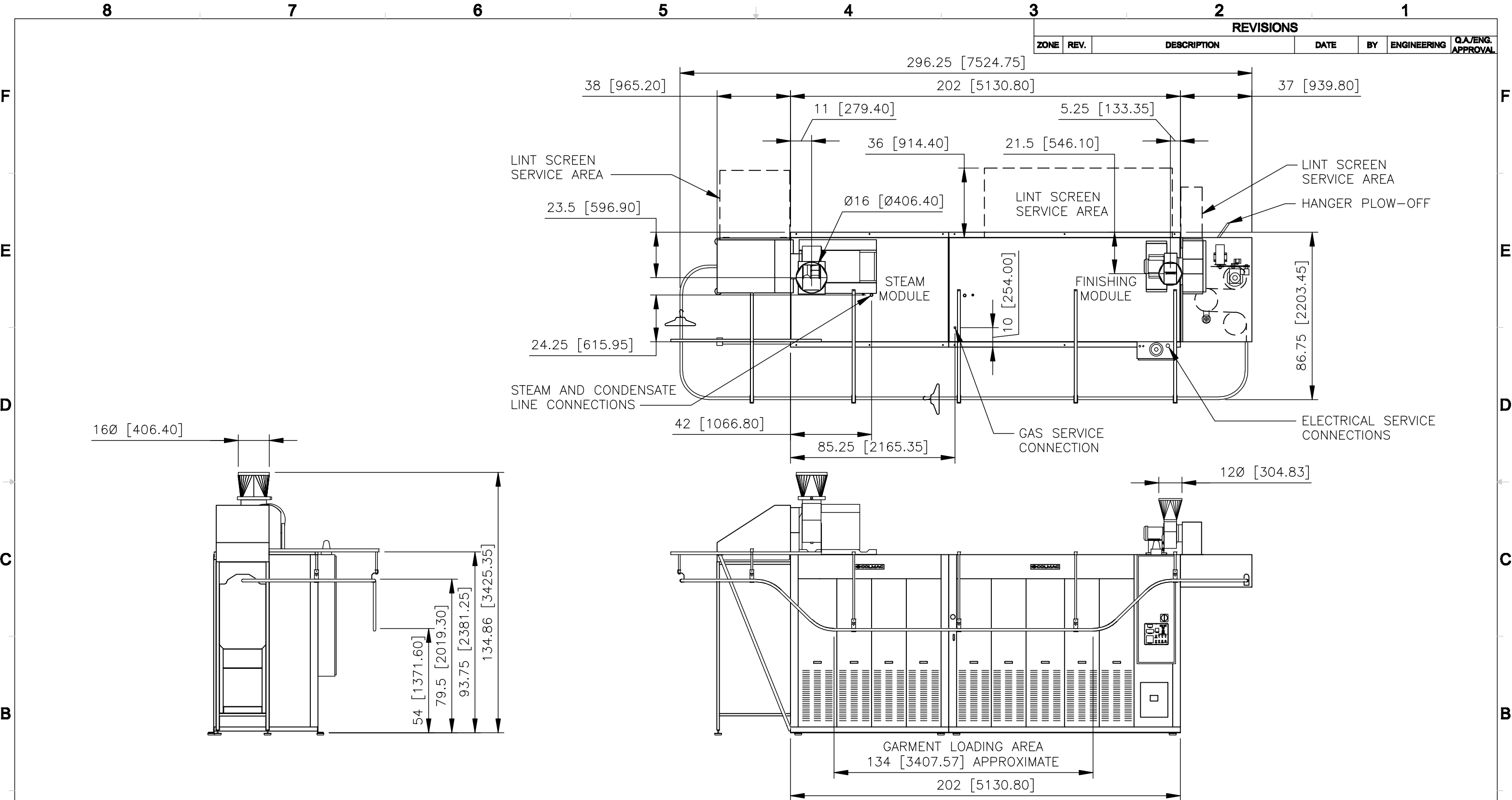
REVISIONS					
ZONE	REV.	DESCRIPTION	DATE	BY	ENGINEERING Q.A./ENG. APPROVAL

- NOTES:**
- REFER TO PRODUCT LINE SPECIFICATION SHEET FOR ELECTRICAL AND MECHANICAL CONSUMPTION REQUIREMENTS.
 - INFORMATION CONTAINED ON THIS DRAWING IS SUBJECT TO CHANGE WITHOUT NOTICE.

PROPRIETARY AND CONFIDENTIAL
 THE INFORMATION CONTAINED IN THIS DRAWING IS THE SOLE PROPERTY OF COLMAC INDUSTRIES. ANY REPRODUCTION IN PART OR AS A WHOLE WITHOUT THE WRITTEN PERMISSION OF COLMAC INDUSTRIES IS PROHIBITED.

REV. #	REV STATUS OF SHEET

UNLESS OTHERWISE SPECIFIED: DIMENSIONS ARE IN INCHES [mm] TOLERANCES: FRACTIONAL: ±1/16 ANGULAR: MACH: ±1° BEND: ±1° TWO PLACE DECIMAL: ±0.03 THREE PLACE DECIMAL: ±0.031	CONTRACT NO.	COLMAC INDUSTRIES 401 N. Lincoln, Colville, Washington 99114 (509)684-4505	
	DRAWN BY: NAH	DATE: 04/14/08	TITLE: INSTALLATION AND SALES
	ENGINEER:	DATE:	CFS 2100-1 G/S-X RH
	ENG APPR.	DATE:	LOW CONVEYOR
SOLIDWORKS	AUTOCAD	SIZE: DWG. NO.	REV
APPLICATIONS DO NOT SCALE DRAWING		B 970362-0001	-
SCALE: -	UNIT WT. -	SHEET: - OF -	



REVISIONS					
ZONE	REV.	DESCRIPTION	DATE	BY	ENGINEERING
					QA/ENG. APPROVAL

- NOTES:**
- REFER TO PRODUCT LINE SPECIFICATION SHEET FOR ELECTRICAL AND MECHANICAL CONSUMPTION REQUIREMENTS.
 - INFORMATION CONTAINED ON THIS DRAWING IS SUBJECT TO CHANGE WITHOUT NOTICE.

UNLESS OTHERWISE SPECIFIED: DIMENSIONS ARE IN INCHES [mm] TOLERANCES: FRACTIONAL ±1/16 ANGULAR: MACH: ±1° BEND ±1° TWO PLACE DECIMAL ±0.03 THREE PLACE DECIMAL ±0.031		CONTRACT NO.	
DRAWN BY: NAH	DATE: 04/14/08	TITLE: INSTALLATION AND SALES CFS 2100-1 G/S-X LH LOW CONVEYOR	
ENGINEER:	DATE:	SIZE: DWG. NO.	REV
ENG APPR.	DATE:	B 970363-0001	-
SOLIDWORKS AUTOCAD		SCALE: -	UNIT WT. -
DO NOT SCALE DRAWING		SHEET: - OF -	

COLMAC INDUSTRIES 401 N. Lincoln, Colville, Washington 99114 (509)684-4505	
TITLE: INSTALLATION AND SALES CFS 2100-1 G/S-X LH LOW CONVEYOR	
SIZE: DWG. NO.	REV
B 970363-0001	-
SCALE: -	UNIT WT. -
SHEET: - OF -	

PROPRIETARY AND CONFIDENTIAL
THE INFORMATION CONTAINED IN THIS DRAWING IS THE SOLE PROPERTY OF COLMAC INDUSTRIES. ANY REPRODUCTION IN PART OR AS A WHOLE WITHOUT THE WRITTEN PERMISSION OF COLMAC INDUSTRIES IS PROHIBITED.

REV. #	REV STATUS OF SHEET
SHT. #	

APPLICATIONS

8 7 6 5 4 3 2 1

F
E
D
C
B
A

F
E
D
C
B
A

8 7 6 5 4 3 2 1