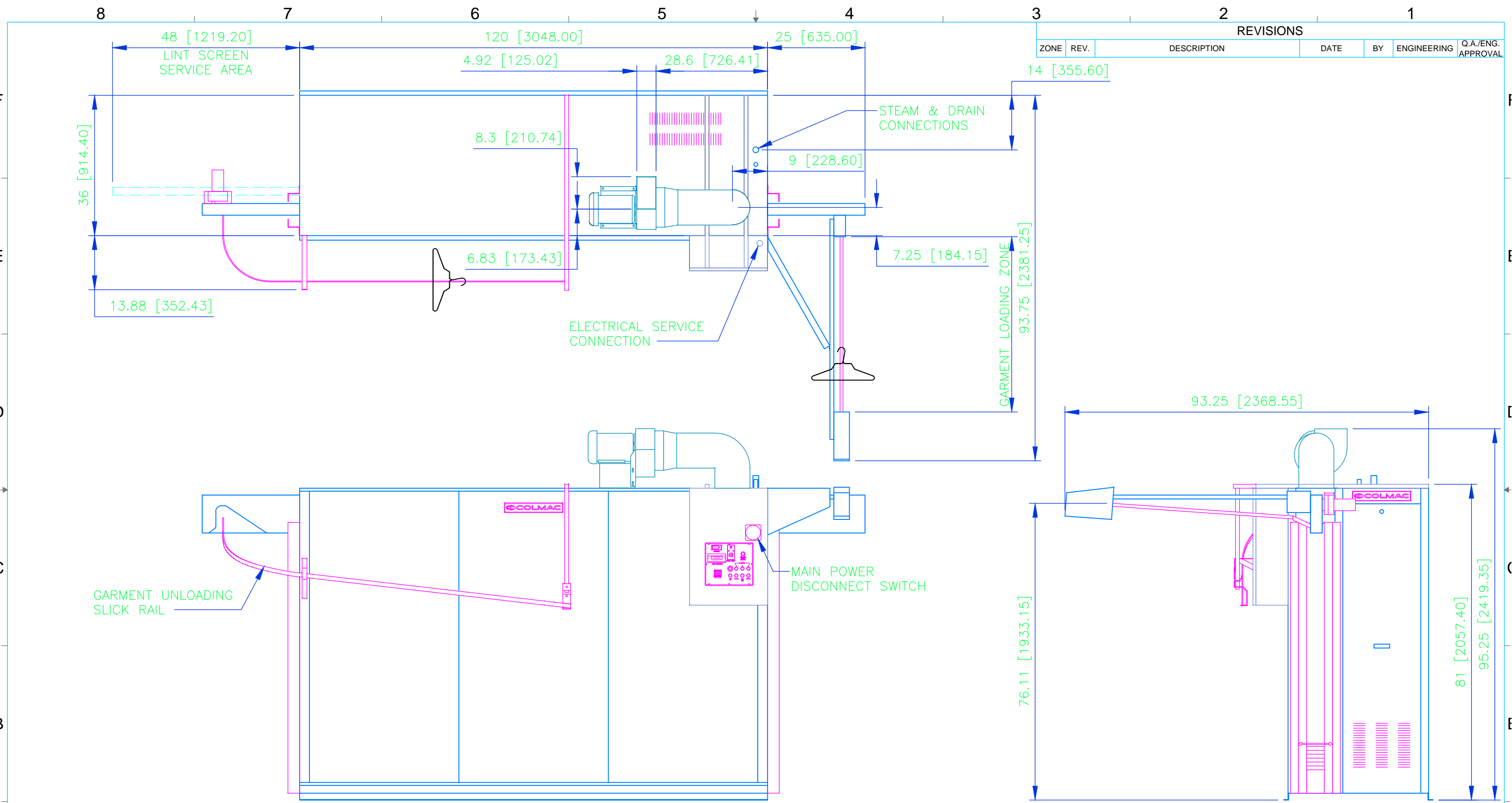


REVISIONS					
ZONE	REV.	DESCRIPTION	DATE	BY	ENGINEERING Q.A./ENG. APPROVAL

- NOTES:**
- REFER TO PRODUCT LINE SPECIFICATION SHEET FOR ELECTRICAL AND MECHANICAL CONSUMPTION REQUIREMENTS.
 - INFORMATION CONTAINED ON THIS DRAWING IS SUBJECT TO CHANGE WITHOUT NOTICE.

UNLESS OTHERWISE SPECIFIED: DIMENSIONS ARE IN INCHES [mm] TOLERANCES: FRACTIONAL ±1/16 ANGULAR: MACH ±1° BEND ±1° TWO PLACE DECIMAL ±0.03 THREE PLACE DECIMAL ±0.031	CONTRACT NO.		COLMAC INDUSTRIES 401 N. Lincoln, Colville, Washington 99114 (509)684-4505	
	DRAWN BY: NAH		DATE: 05/15/08	
	ENGINEER:		DATE:	
	ENG APPR.		DATE:	
SOLIDWORKS		AUTOCAD		TITLE: INSTALLATION AND SALES CFS 300 RH W/ EXHAUST BLOWER
DO NOT SCALE DRAWING		SCALE: -		SIZE: DWG. NO. B 970397-0001
APPLICATIONS		UNIT WT. -		SHEET: - OF -

PROPRIETARY AND CONFIDENTIAL
 THE INFORMATION CONTAINED IN THIS DRAWING IS THE SOLE PROPERTY OF COLMAC INDUSTRIES. ANY REPRODUCTION IN PART OR AS A WHOLE WITHOUT THE WRITTEN PERMISSION OF COLMAC INDUSTRIES IS PROHIBITED.



REVISIONS					
ZONE	REV.	DESCRIPTION	DATE	BY	ENGINEERING Q.A./ENG. APPROVAL

- NOTES:**
1. REFER TO PRODUCT LINE SPECIFICATION SHEET FOR ELECTRICAL AND MECHANICAL CONSUMPTION REQUIREMENTS.
 2. INFORMATION CONTAINED ON THIS DRAWING IS SUBJECT TO CHANGE WITHOUT NOTICE.

PROPRIETARY AND CONFIDENTIAL
 THE INFORMATION CONTAINED IN THIS DRAWING IS THE SOLE PROPERTY OF COLMAC INDUSTRIES. ANY REPRODUCTION IN PART OR AS A WHOLE WITHOUT THE WRITTEN PERMISSION OF COLMAC INDUSTRIES IS PROHIBITED.

UNLESS OTHERWISE SPECIFIED: DIMENSIONS ARE IN INCHES [mm]		CONTRACT NO.		COLMAC INDUSTRIES 401 N. Lincoln, Colville, Washington 99114 (509)684-4505	
TOLERANCES: FRACTIONAL ±1/16 ANGULAR: MACH ±1° BEND ±1° TWO PLACE DECIMAL ±0.03 THREE PLACE DECIMAL ±0.031		DRAWN BY: NAH DATE: 05/15/08		TITLE: INSTALLATION AND SALES CFS 300 LH W/ EXHAUST BLOWER	
		ENGINEER: DATE:		SIZE: DWG. NO.	
		ENG APPR. DATE:		B 970398-0001	
		SOLIDWORKS AUTOCAD		REV -	
APPLICATIONS		DO NOT SCALE DRAWING		SCALE: - UNIT WT. - SHEET: - OF -	