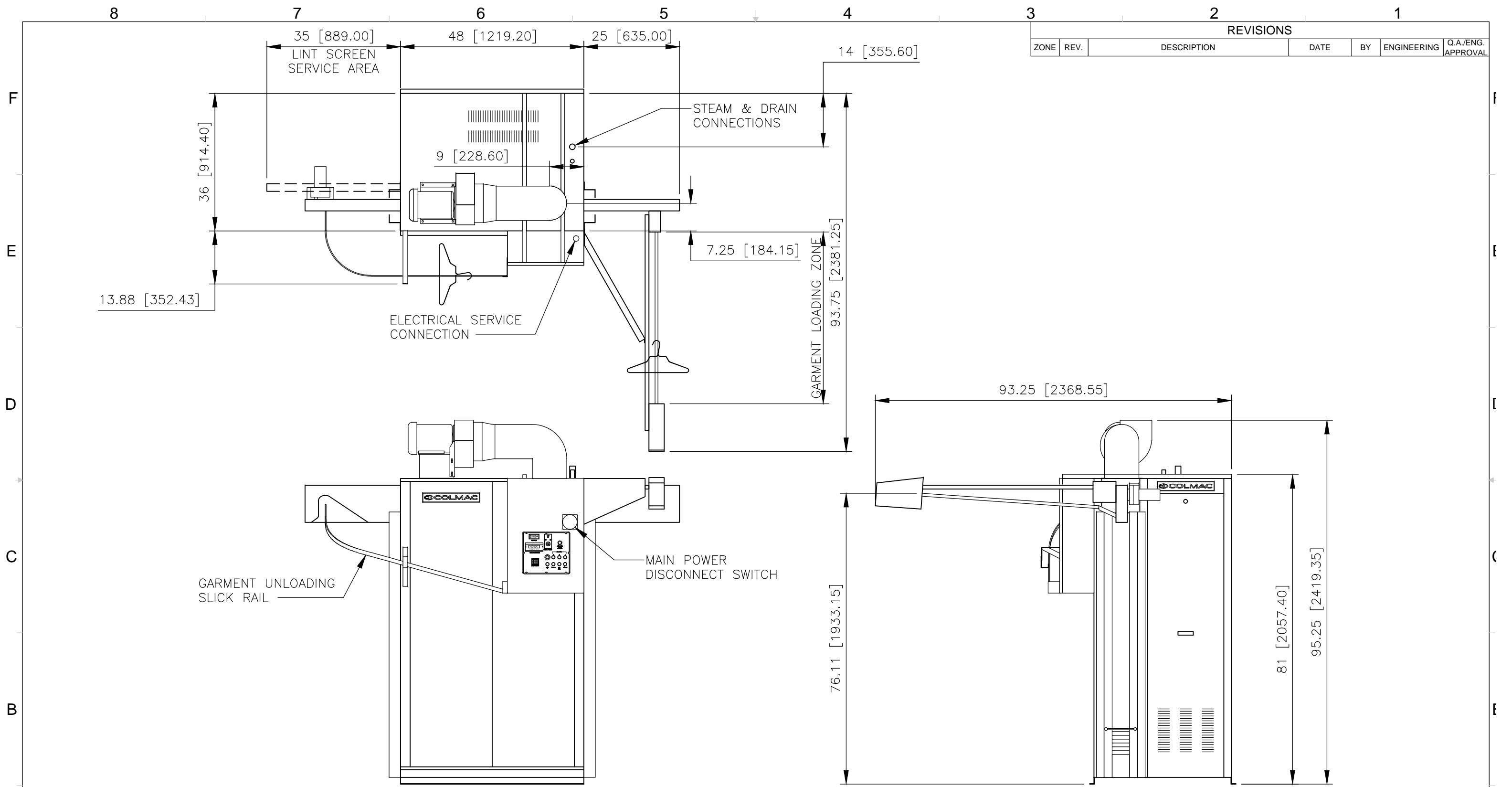


REVISIONS					
ZONE	REV.	DESCRIPTION	DATE	BY	ENGINEERING Q.A./ENG. APPROVAL

- NOTES:**
1. REFER TO PRODUCT LINE SPECIFICATION SHEET FOR ELECTRICAL AND MECHANICAL CONSUMPTION REQUIREMENTS.
  2. INFORMATION CONTAINED ON THIS DRAWING IS SUBJECT TO CHANGE WITHOUT NOTICE.

UNLESS OTHERWISE SPECIFIED: DIMENSIONS ARE IN INCHES [mm] TOLERANCES: Ø ±0.000 ±0.005 Ø ±0.001 ±0.005 Ø ±0.002 ±0.005 Ø ±0.003 ±0.005 Ø ±0.004 ±0.005 Ø ±0.005 ±0.005	CONTRACT NO.		COLMAC INDUSTRIES 401 N. Lincoln, Colville, Washington 99114 (509)684-4505	
	DRAWN BY: NAH		DATE: 05/15/08	
ENGINEER:		DATE:		
ENG APPR.:		DATE:		
SOLIDWORKS		AUTOCAD		
DO NOT SCALE DRAWING		SCALE: -	UNIT WT. -	SHEET: - OF -

PROPRIETARY AND CONFIDENTIAL  
THE INFORMATION CONTAINED IN THIS DRAWING IS THE SOLE PROPERTY OF COLMAC INDUSTRIES. ANY REPRODUCTION IN PART OR AS A WHOLE WITHOUT THE WRITTEN PERMISSION OF COLMAC INDUSTRIES IS PROHIBITED.



**NOTES:**

1. REFER TO PRODUCT LINE SPECIFICATION SHEET FOR ELECTRICAL AND MECHANICAL CONSUMPTION REQUIREMENTS.
2. INFORMATION CONTAINED ON THIS DRAWING IS SUBJECT TO CHANGE WITHOUT NOTICE.

UNLESS OTHERWISE SPECIFIED: DIMENSIONS ARE IN INCHES [mm] TOLERANCES: Ø: ±0.0013" (±0.033mm) H: ±0.0013" (±0.033mm) V: ±0.0013" (±0.033mm) P: ±0.0013" (±0.033mm)	CONTRACT NO.		COLMAC INDUSTRIES 401 N. Lincoln, Colville, Washington 99114 (509)684-4505		
	DRAWN BY: NAH	DATE: 05/15/08	TITLE: <b>INSTALLATION AND SALES</b> <b>CFS 50 LH W/ CAL AUTOLOADER</b> <b>&amp; BLOWER</b>		
	ENGINEER:	DATE:	SIZE: DWG. NO.	REV	

PROPRIETARY AND CONFIDENTIAL  
THE INFORMATION CONTAINED IN THIS DRAWING IS THE SOLE PROPERTY OF COLMAC INDUSTRIES. ANY REPRODUCTION IN PART OR AS A WHOLE WITHOUT THE WRITTEN PERMISSION OF COLMAC INDUSTRIES IS PROHIBITED.